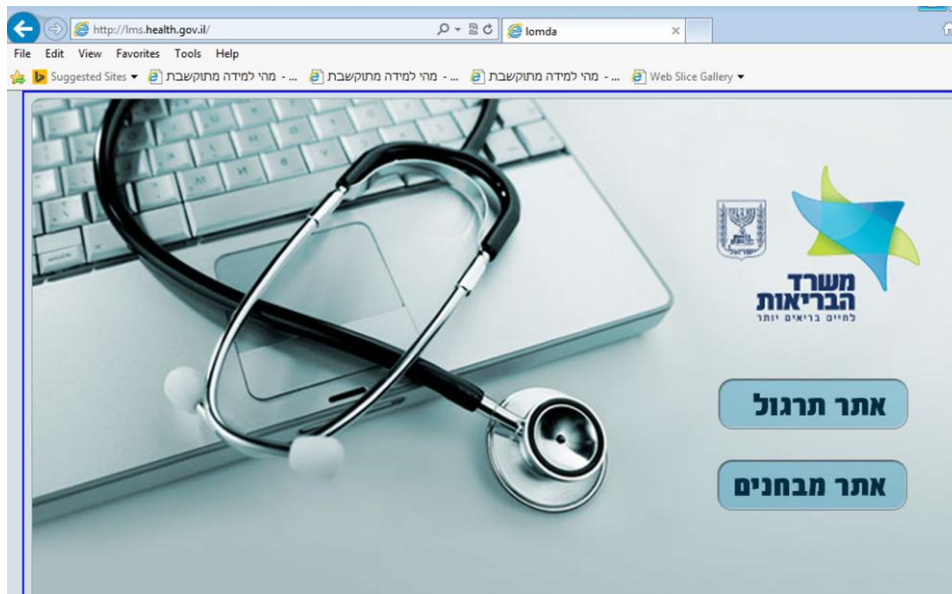


## User guide summary

### Knowledge supplementation courseware and test: for the functioning of the registered nurse in Israel

#### 1. Logging into the system website

- Using the Internet Explorer browser only (do not use other browser types such as Firefox or Chrome), enter the website at: <http://lms.health.gov.il> :



- Click only the top button **אתר תרגול** to enter [the main screen and log into the system](#).

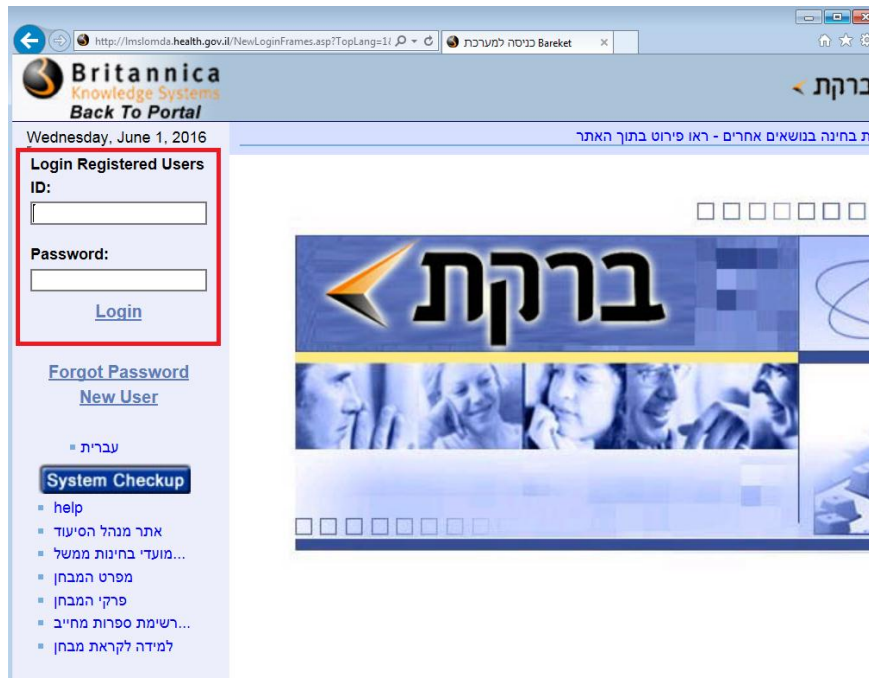
#### 2. Changing language

- Click the **English** button to change the user interface language:



### 3. Main screen and logging into the system

- Initial connection to courseware and test, through:
  - Enter authentication details; "**Username (ID)**" and "**Password**" and click the button "**Login**":

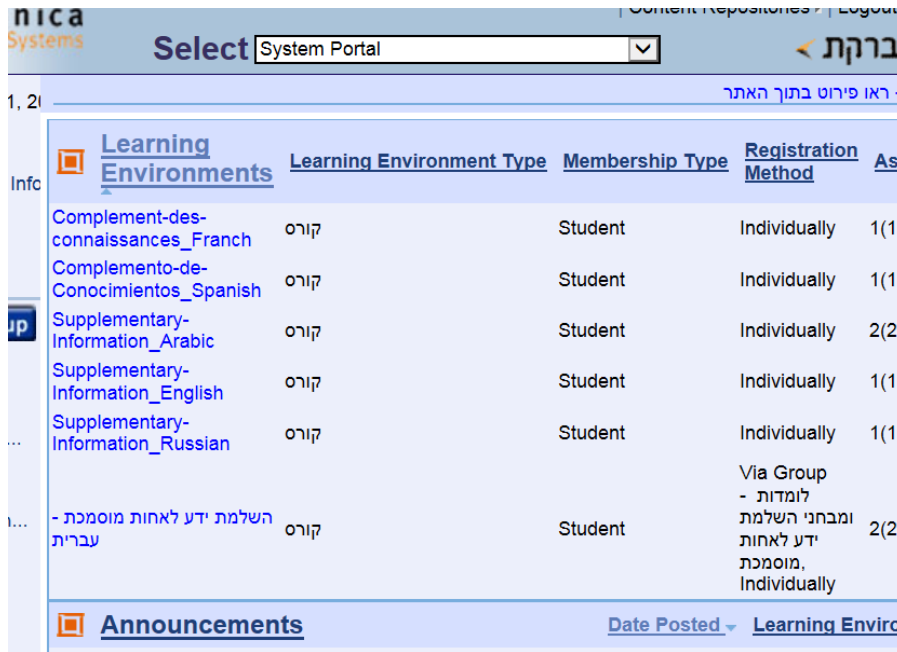


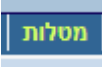
The screenshot shows a web browser window with the URL <http://lmslmda.health.gov.il/NewLoginFrames.asp?TopLang=11>. The page header includes the Britannica Knowledge Systems logo and the text "ברקת" (Bareket). The main content area features a login form for "Login Registered Users" with fields for "ID:" and "Password:", and a "Login" button. Below the form are links for "Forgot Password" and "New User". A "System Checkup" section is located at the bottom left, containing a "help" link and several other links in Hebrew. The page also displays the date "Wednesday, June 1, 2016" and a navigation bar with the text "לדת בחינה בנושאים אחרים - ראו פירוט בתוך האתר".

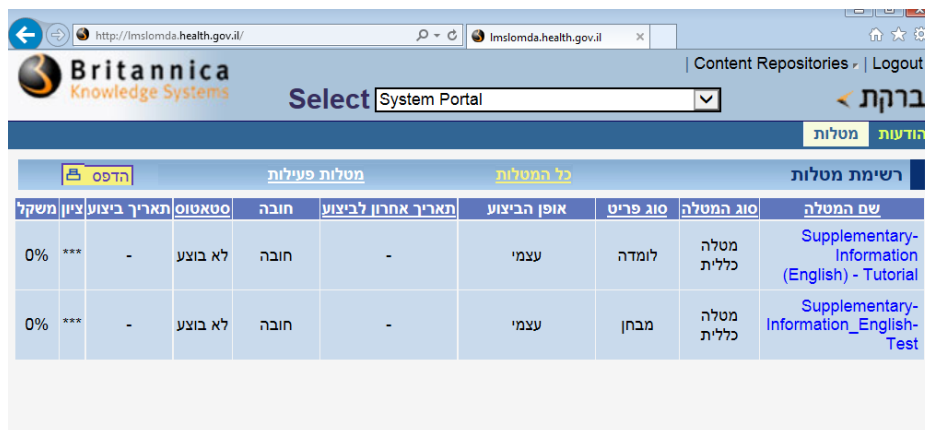
- The username and password appear in the letter that was sent to you by the Ministry of Health's Nursing Administration.

### 4. Viewing courseware and test

- Viewing courseware and test is by:
  - Click the relevant link (supplementation information\_English) in the "**Learning environments**" area:



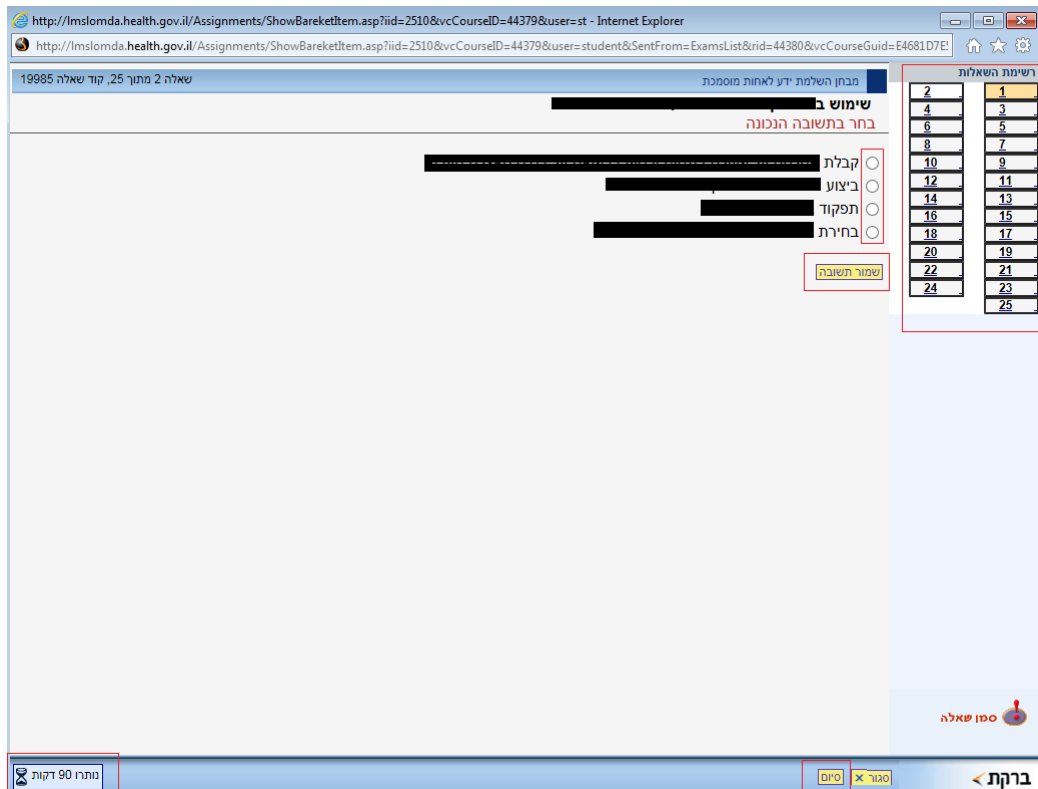
- Click the  tab on the right side of the upper bar :



- Click the courseware link to log into the courseware.
- After finishing courseware, close the courseware window by clicking the "X"



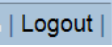
- Click the link for entering the test and receiving the test questions:



- Browse between the test questions by using the question list bar on the right.
- Select a correct answer by clicking the radio button  next to the correct answer and save the answer by clicking the **שמור תשובה** button that appears under the 4 possible answers.
- Please note the number of minutes remaining for taking the test on the bottom left of the screen (By the hourglass).
- Click the finish button **סיום** at the bottom right of the screen only when the test is over. Important! after clicking this button you cannot access the test.
- If necessary, you can retake a test by clicking the **חזרה** button on the test link screen:

הדפס		מטלות פעילות			כל המטלות			רשימת מטלות
תאריך ביצוע	ציון	סטאטוס	חובה	תאריך אחרון לביצוע	אופן הביצוע	סוג פריט	סוג המטלה	שם המטלה
***	-	לא בוצע	חובה	-	עצמי	לומדה	מטלה כללית	Supplementary-Information (English) - Tutorial
***	01/06/2016	בוצע	חובה	-	עצמי	מבחן	מטלה כללית	Supplementary-Information_English-Test

## 5. Logging out of the system

- Log out of the system by clicking the  link on the right of the upper toolbar.